

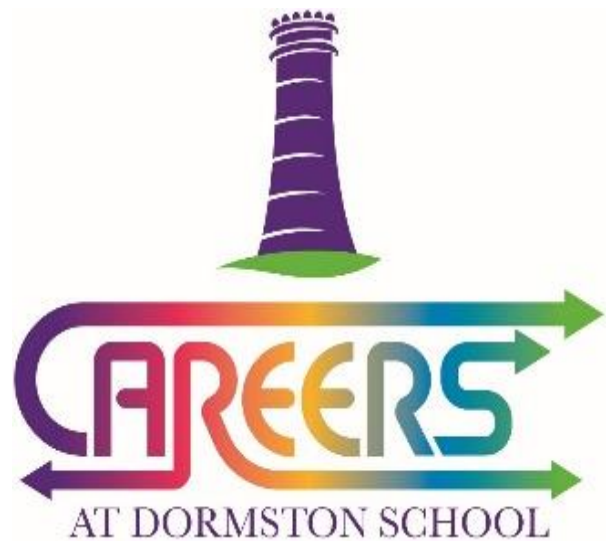


Success for All

Effort - Knowledge - Respect - Responsibility - Resilience

#NCW/2020

2ND - 7TH MARCH 2020



National Careers Week

NCW

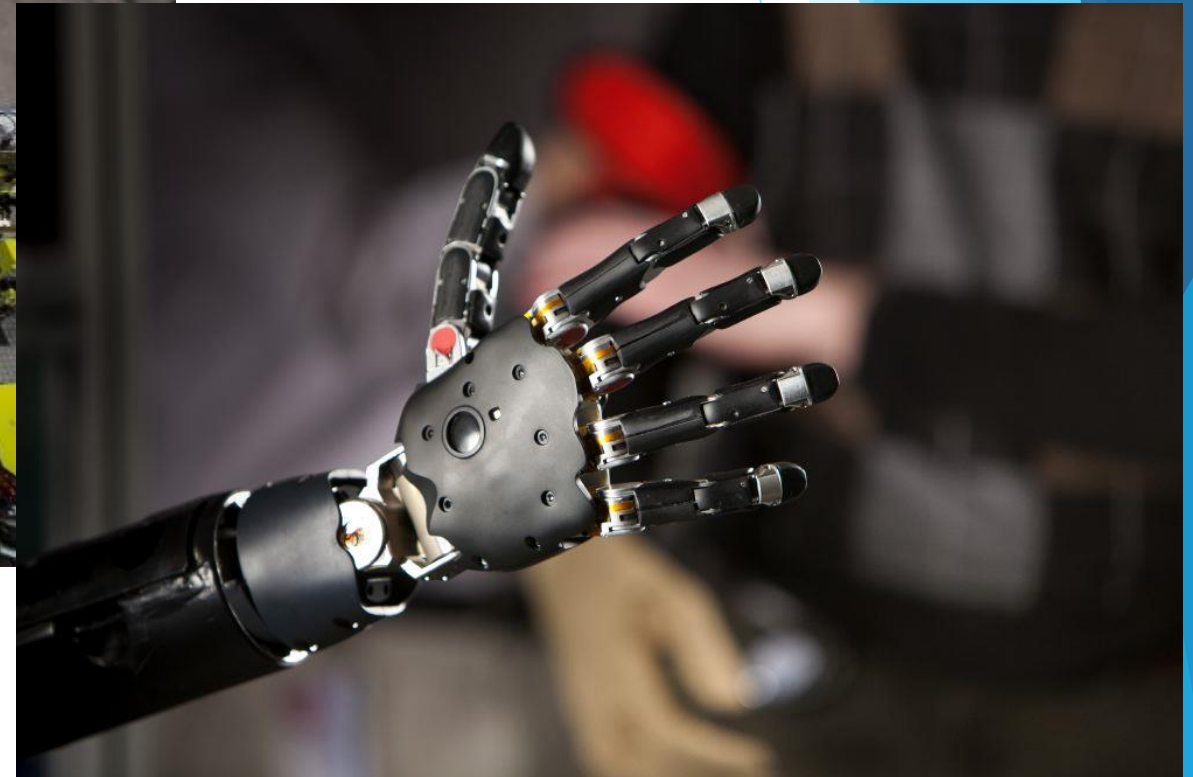
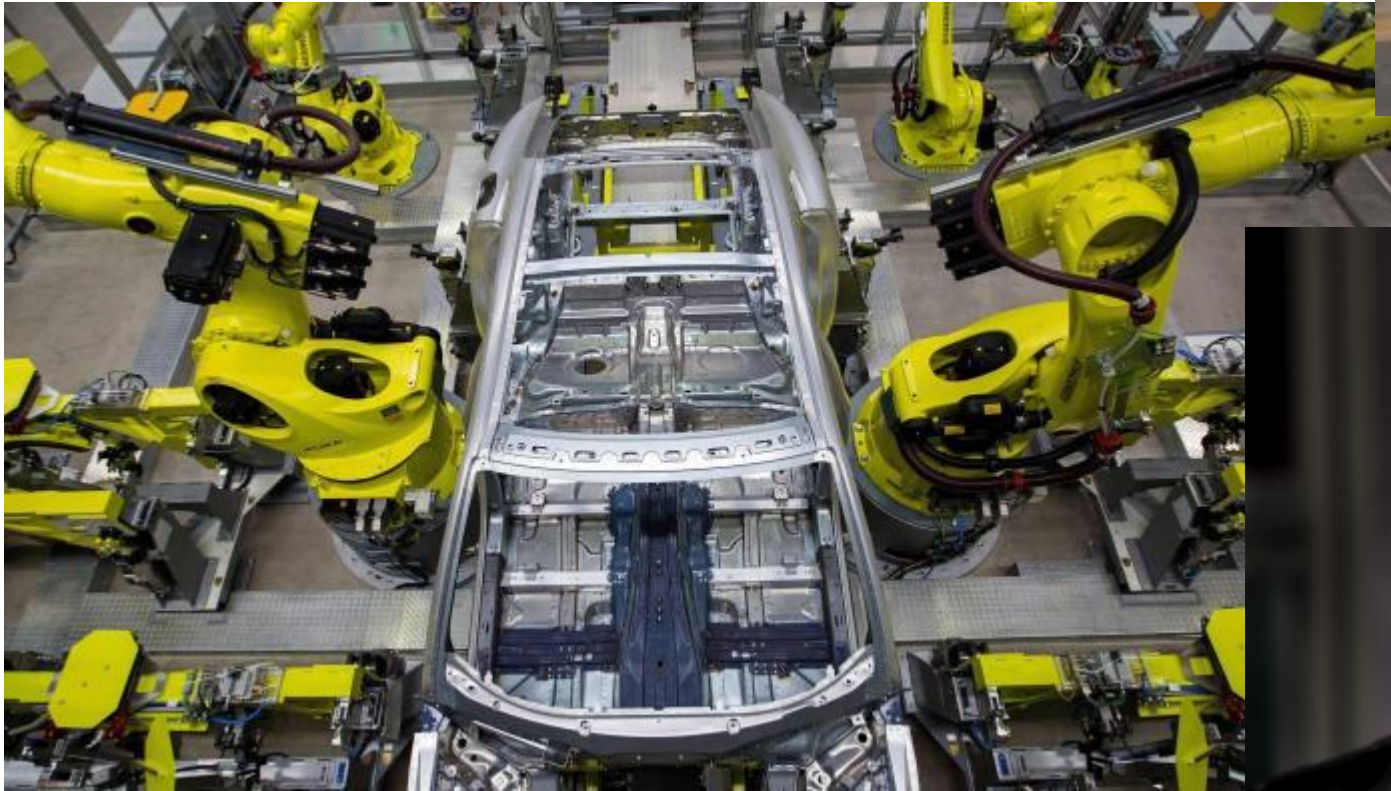


YETI LTD
YOUTH EDUCATION & TRAINING INITIATIVE

Life After Year 11

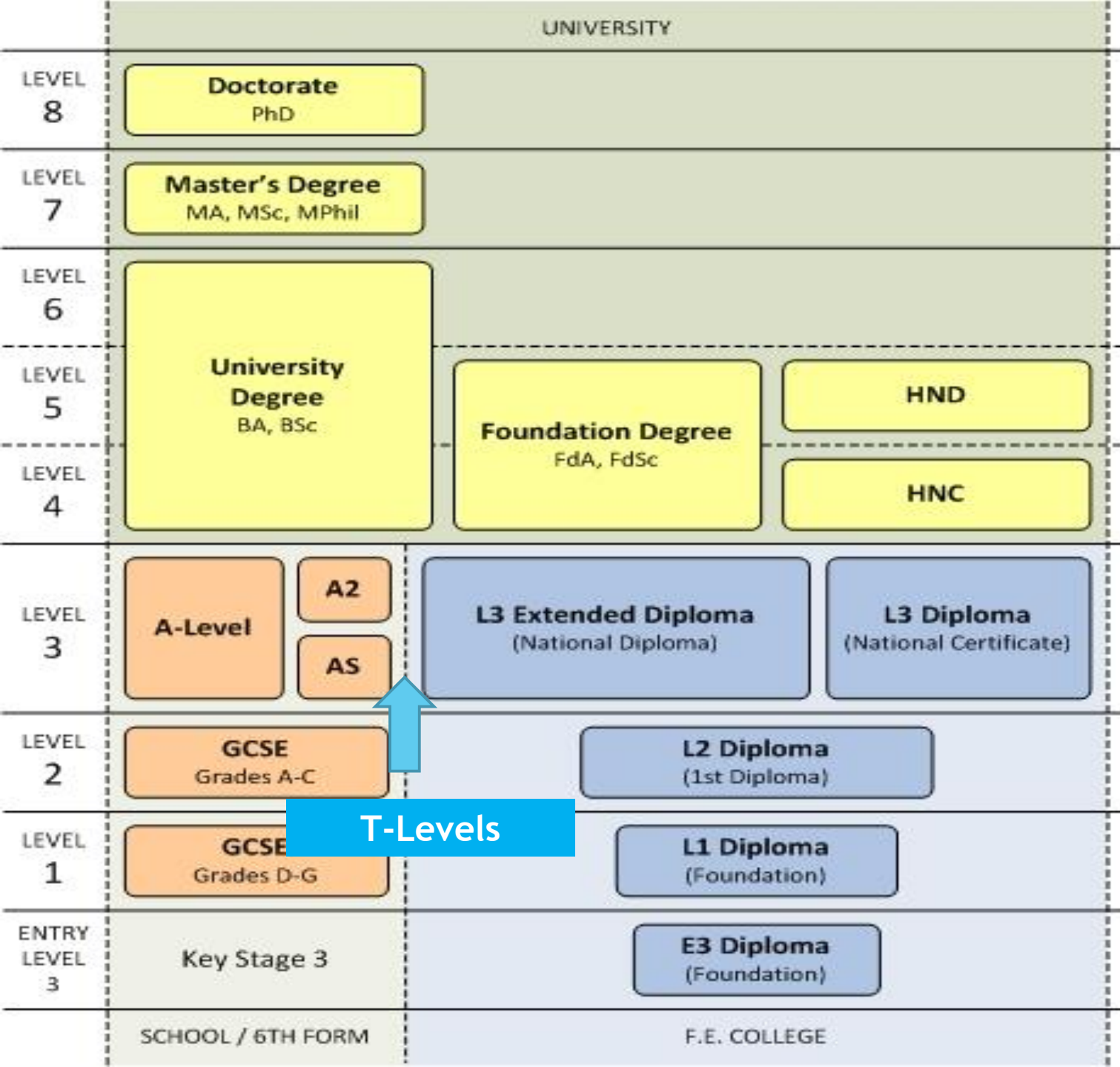
Pete Small
www.theyetiltd.com

Changing workplace...



Develop your skills rather than skills for a specific job

Grading new GCSEs from 2017



New grading structure	Current grading structure
9	
8	A*
7	A
6	B
5	
4	C
3	D
2	E
1	F
	G
U	U

How do you learn best?

A-Levels

- Three or four, subject-based qualifications taken over two years
- Assessed in most cases, by exam
- Usually involves studying 5 days per week
- Usually need 5 GCSEs at grades 9-4
- Great if you are not sure what job/career you want to do
- Can lead to University, Full-time work or an apprenticeship

BTEC's

- A practical-based, vocational qualification
- Study 1-3 subjects over two years
- Usually based on coursework with some exam assessments
- Often 3-4 days per week
- Available at levels 1-5
- Often linked to specific vocational areas, e.g Art & Design/Business
- Can lead to University

How do you learn best?

T-Levels

- Two year, level 3 Technical course, designed by employers
- Worth the same UCAS (University) points as three A-Levels or an Extended BTEC
- Involves a work placement for approx. 45 days
- 25 subjects available in 2021;
 - ← Building Services Engineering
 - ← Digital Business Services
 - ← Digital Support Services
 - ← Health
 - ← Healthcare Science
 - ← Onsite Construction
 - ← Science
 - ← Design, Surveying and Planning (construction)
 - ← Digital Production, Design and Development
 - ← Education

So, what could you do?...

Sixth Forms

Offer a range of courses including A-Levels and BTEC's

Small environment

Very similar to school - rules, dress code, free periods?

Easy to access support

Familiar environment and support network



Colleges

Huge range of courses

Range of age groups

Large and busy

More independence

Very similar to Uni



Or...





Apprenticeships / Traineeships

Work-based learning

1-3 years

Range of levels

PAID vs Employer expectations

Competitive



Training Provider

Small classes

Intensive Support

Employability Skills

Work Experience



Full-time Employment

RPA - Training?

Minimum wage £4.05 ph

What to do next...

- ← Research jobs, courses and qualifications
- ← Speak to Parents/Carers, Teachers, Careers Advisors
- ← Keep asking questions
- ← Don't miss deadlines or appointments